



Whisk

Curiosity. This is the word that represent the almost complete sense of my life. The curiosity that pushes me every day, at every moment, almost obsessively to trying to understand, to know, to look at the world around us with new eyes. It is curiosity that makes me take new way, a search for new emotions, a dream of new roads, roads that are not always right, not always easy. Often curiosity leads me into situations I don't know where to make mistakes, it can happen, you can suffer, but in the end you really feel alive. Curiosity makes me feel alive.



We are unique, original and unrepeatabe, you just need to find yourself, abandon yourself, let yourself go, have the chance to make the soul to be free.

To rethink an object, create a new one, make a drawing, we must first forget, let the pencil flow on the sheet. We must know how to forget. Like in love, to love, we must first forget the past, the reasoning, the pain, the memories, which are only footprints along the path of our life.

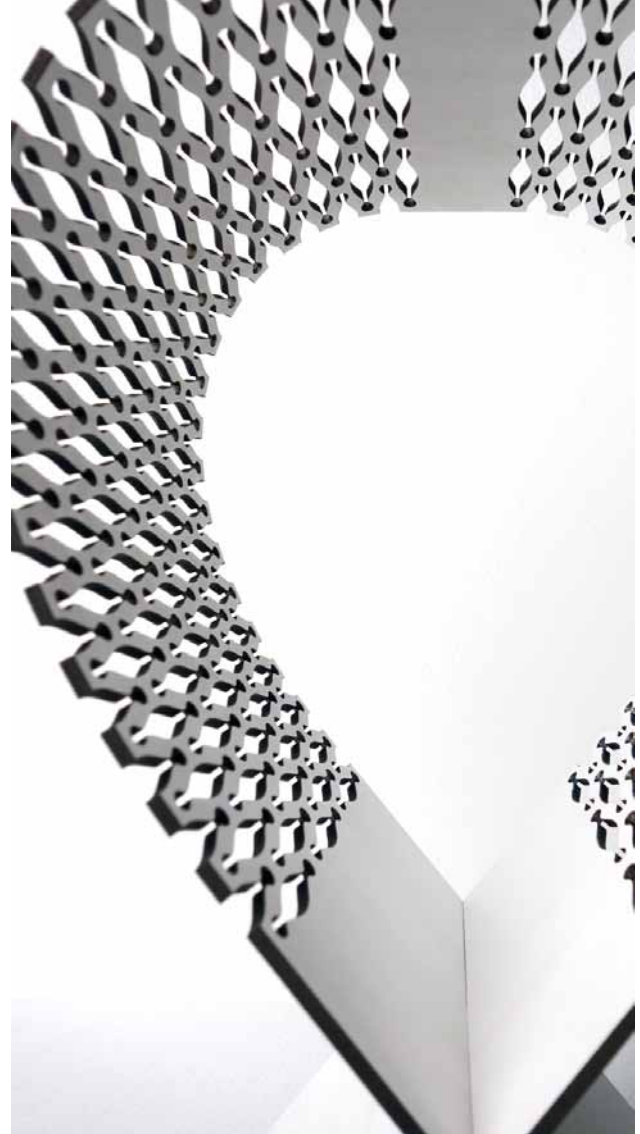
LYNX

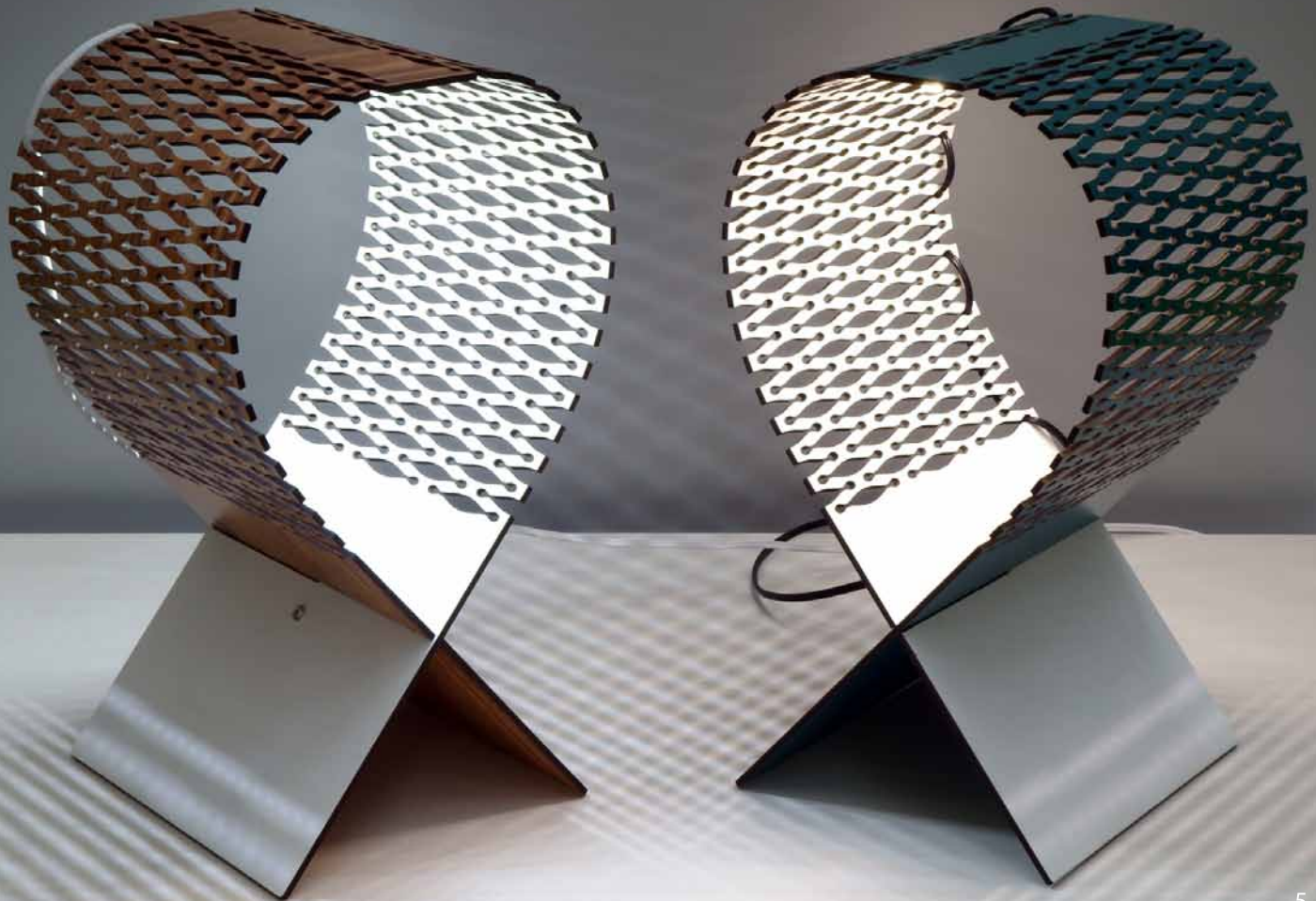
Lynx represents the research in the simplicity of form through the use of a few elements. A single panel of mdf wood, finished with a particular laser technique, and a single fixing element to maintain the shape. Few components to create an attractive, elegant and modern object. The curves of the lamp intersect each other. Even when turned off, the lynx lamp creates curiosity in its shape in its simple geometry, like a mark of a pencil on a sheet. Simple, modern and elegant. With the light on that is projected downwards, games of shadows are created. Light passes through the material and creates different effects in every point of view. Inside, the white finish gives a feeling of peace of homogeneity, of atmosphere.

Dim. h.320 x L.180 mm

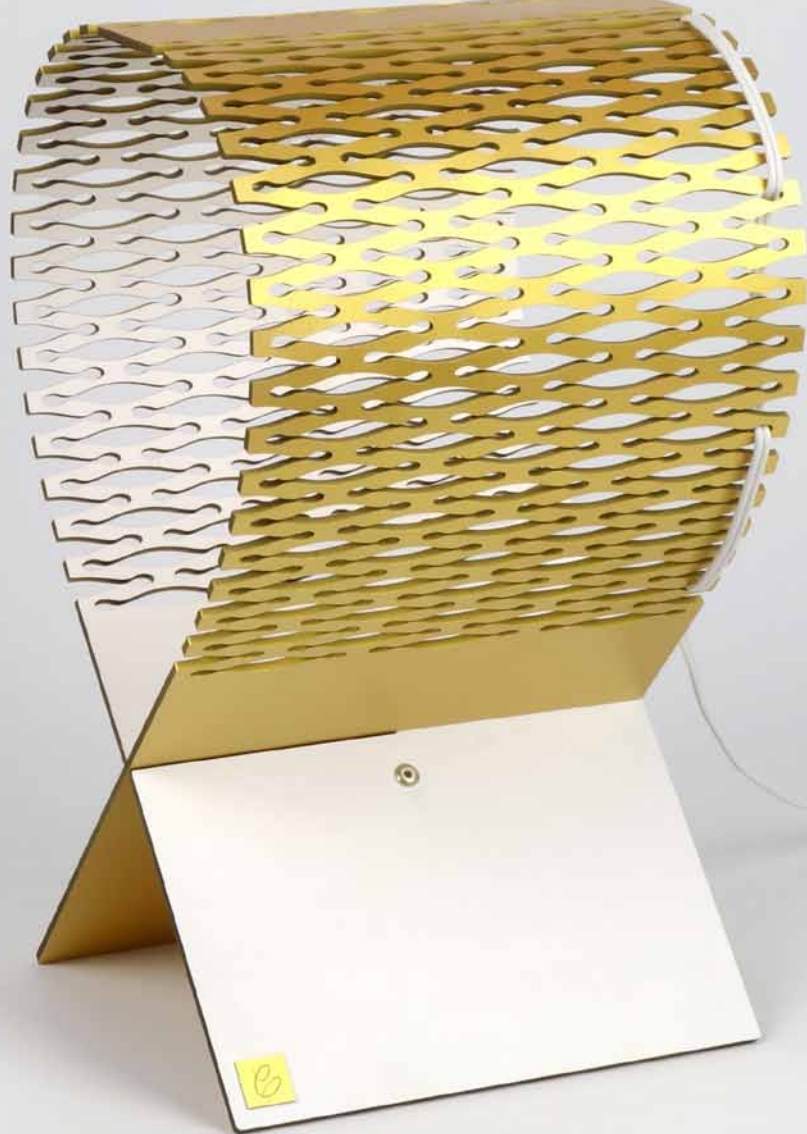
Packaging: White wooden box

Packaging Dim. h.360 x L.250 x P.250 mm









NEBU

Nebu is a creation born from the desire to leave free the shape of the lamp and interact with the material. The light, and the shadows crosses the curves of the fabric and they create unique shapes. The light and the shadows are the very protagonists of this project. I've used a shape like a picture to emphasize the light / shadow effect. Made with aluminum, wood and plexiglass. LED lighting system. I chose two shape for the first series, a lamp and a heart. The lamp because I like to recall an illumination symbol, the heart because it's a form of protection, of security, hidden behind a fabric, but illuminated by a light hope.

Dim. h.600 x L.400 mm

Packaging: Wooden laser cut box





NEBU





CIGNUS

Sculptural lamp inspired by the lightness and elegance of the swan. Made by white acrylic and synthetic metal gold leather. LED light system

Dim: 900 x h.280 x 180 mm

Packaging: Wooden laser cut box

Photo By Matteo Mazzoni





MANTA

The Manta lamp was inspired by the natural forms of its marine namesake. A fish with graceful movements, soft, elegant, with uncommon shapes. In fact, in this project I wanted to keep the shapes of the manta, and for this, I tried to create curves and lines that could give movement and different perceptions from different points of view. From the front view it recalls the movement of the manta fins, but if you change perspective, the lamellar shape is designed to recall the gills, typical of this species. The material that I chose for this project is the opaque white acrylic, initially I tried with the transparent, but did not exaggerate the shapes too, instead with this color, in addition to the light transparency, to the white that makes it soft in the shapes, with the light that crosses the elements creates shadows that further enhance the curves, and the lightness that I wanted to represent in this project.

Dim: 840x250x h.200 mm

Packaging: Wooden laser cut box



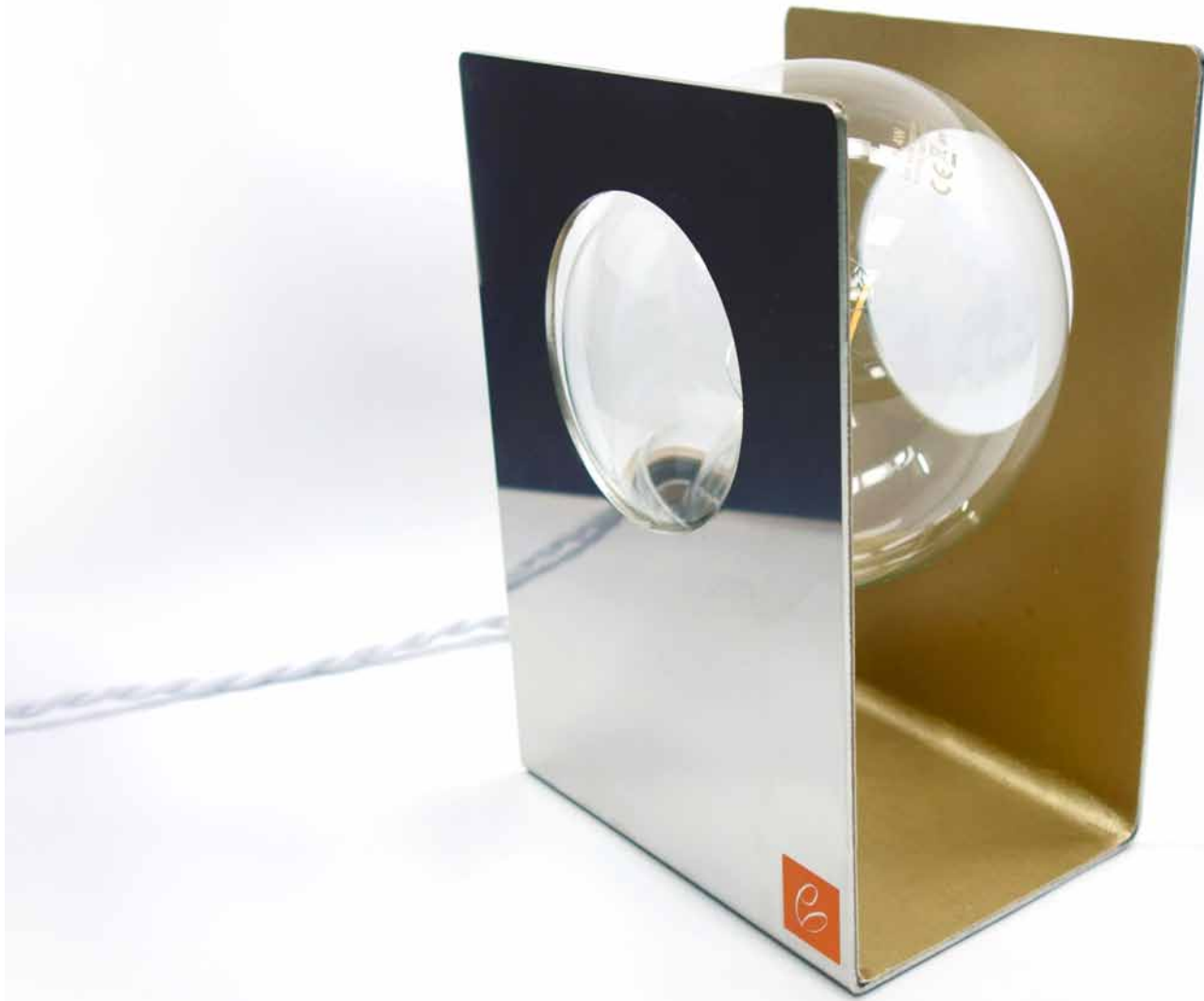


ALTAIR

Altair has been conceived as a light carrier, as a light-supporting element, where light becomes almost fluctuating into the space.

Dim: p.14 x h.20 x 10 cm





MOLOCKO

By Morden Gore

From the collaboration with the artist Morden Gore, comes this new interpretation of Molocko floor lamp. A lamp decorated entirely by hand on both sides with two only apparently equal faces, but different. Once turned on, the light passing through the face, comes out the magic of this work.

www.mordengore.com

Painted and decorated by MordenGore ©

Photo By Matteo Mazzoni ©

Dim.

Hight - 30 x 30 x 90 cm (11,8 x 11,8 x 35,4 in) -

Material: laminated wood





INFINITY

Inspired by the infinite space the surround us.

Born from the emotions the I feel every time I look up at the stars, trying to see more and more distant.

The shape of the lamp, and the particular, non regular, intersection of the two elements, are studied to create different perceptions from different angle of view. The circle represent the concept of endless.

Dim. : 40 x 40 x 40 cm

Material: steel

Photo By Matteo Mazzoni





AURORA

Aurora is the result of a research of dynamic balance between shape and lines. A static object, but due to the effects of light and slender forms, appears in motion. The shape is inspired by aircraft of the new generation, this gives an "aerodynamic" effect to the lamp.

LED light source, metal plate, painted in matte black or white

Dim: h. 360 mm





MC CYMBALS

Each piece has to have cracks and signs of wear to be considered for this design. In addition, the cracks are for the cymbals the end of the “musical career” of the instrument and a new life as recycled lamp.

It is not just a lamp. It is a story of different origins, music style and artists, brands and their supporters. The search can be lengthy and often through established channels, friend, clubs, music rooms and concert. Each cymbal is an entire journey in the search of the most suitable one. The result is beautiful and never to be taken for granted, each lamp is completely different from any other, almost like individuals with their own personality! The signs of wear and tear can never duplicate and can break at any point. This is an item appreciated by those with a gentle nature who enjoy admiring unique pieces. In addition, the beauty is in the colour of the cymbal lampshade, usually bronze to give the lamp the ideal vintage finishing





MOLOCKO

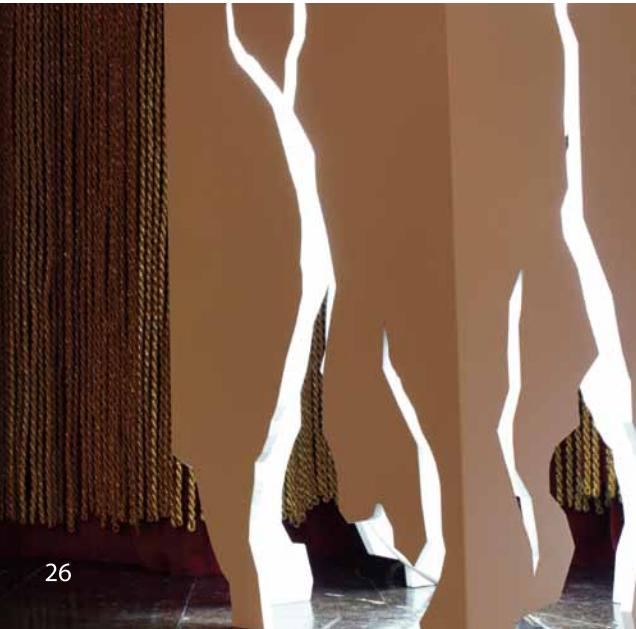
Molocko, the light that accompanies the sunset, which penetrates through the forms, which intersects with lines dictated by the contrast. The linearity of a shape such as a cube, interrupted and displaced from its geometric nature, accentuated by a light source that tries to expand, as if to break the perfection of a geometric shape, such as the opposition of non-transparent material to the passage of light. The conflict between the forms enclosed in the same object, generates a tension, amplified by a light source that drives the light to be channeled into every crevice. The same forms coexist and remain in balance, suspended in time.

White wood lamp/furniture, light source with low energy light.

Dim.

Hight - 30 x 30 x 90 cm (11,8 x 11,8 x 35,4 in) -

Struttura in legno laminato





YES - JO

Two different wine holder, made in steel and finished with a particular soft touch paint. Extremely thin, but strong at the same time.

YES - Dim. 28 x 25 x 11 cm - ø 34 mm

JO - Dim. 30 x 9 x 11 cm - ø 34 mm









Leonardo Criolani

www.leonardocriolani.com